

Army Engineer Spouses' Club Castle Gram

Volume II, Issue VI

February 2012

Inside this issue:

The Gavel	2
The Capital Connection	3
Women and War	4
Member Celebration	5
Sharing	6
Recruitment/Humor	7
AEMA Scholarship	8
Membership Application	9

Women's Contributions

To the Corps of Engineers During World War II

During World War II, women worked outside their homes and in non-traditional occupations in unprecedented numbers. As millions of men and thousands of women entered the armed services, the country faced a shortage of workers needed to maintain a strong economy and support the war effort. While the most famous image of wartime women workers was "Rosie the Riveter," women moved into hundreds of other occupations that formerly had been the preserve of men. Contemporaries recognized this revolution in the world of work and acknowledged the new and critical roles of women in the wartime economy.

In June 1944, the Society of American Military Engineers' magazine, *Military Engineer*, published an article on women who worked for the Corps of Engineers on the home front. Titled, "Woman Power in the Corps of Engineers," the article, based on a Corps press release, described the wide variety of jobs filled by women. At that time just over 2,000 women worked in Corps headquarters, then called the Office of the Chief of Engineers (OCE). In 1903, only three women clerks worked in the much smaller OCE, and only 150 worked in OCE just after World War I. Many women remained in clerical positions during World War II, but others moved into new areas. According to the article, "Mary Elizabeth Spies and Dorothy Frye are the first two female mechanical and heating engineers of the Corps."

More than a thousand women worked in other engineer agencies in the Washington, D.C., area. At the Army Map Service (AMS), predecessor of today's National Geospatial-Intelligence Agency, women worked as photographers, negative cutters, translators, "draftsmen," and "women pressmen." Many worked the swing shift and spent hours on busses and streetcars getting to work. Proving that some things never change, the article noted that "traveling in Washington at any time isn't fun."

Throughout the Corps, women filled jobs that men traditionally held. At the Baton Rouge, Louisiana, Engineer Depot, 30 women served as plant guards. Although the article in *Military Engineer* praised the contributions of women to the war effort, it did not entirely escape the gender stereotyping that characterized the period when it noted that the plant guards "have shown an unusual aptitude for both marksmanship and Judo." In the Portland District a female survey crew measured the contour and depth of the Columbia River channel. The district's chief survey engineer noted that the work required "intensive accuracy and teamwork," and according to him the female crew had "proved as capable, if not more so, than the men who formerly held these same positions." After the war, many women returned to working in the home, but during the wartime crisis, women demonstrated that they could perform traditional and non-traditional jobs with skill and dedication.



Lucy Barney, Radio and Telegraph Operator on the Mississippi River, for the Vicksburg District



Mary Elizabeth Spies and Dorothy Frye—first two female mechanical and heating Engineers of the Corps

"Keeping our worldwide Engineer family connected - through the years and across the miles."

The Gavel

...a note from our President



Dear AESC friends:

Welcome to the new year of 2012! I hope your holidays were happy, although, like mine, they probably went too fast. As I write this in January we've just experienced our first snowfall of the year. The weather is finally realizing it is winter and not an extended Indian summer. But I'm not complaining.

Your board is still busy. We recently had a great "Gnocchi Cook-off" that was an off-shoot of the trip to a cooking school in National Harbor in the fall. The enthusiasm and inventiveness of our co-vice-presidents, Kathleen Whittle and Mary Pratt can be contagious. Thanks to Sarah Pearce for hosting. Local members, watch your inbox for coming events. Make a point of trying to attend - a lot of work goes into the planning. And, if you have suggestions for outings that you would like to do with a crowd, let Kathleen or Mary know.

Another of our Board members, our treasurer Holly Scherer, is the co-author of a new book for military families called "1001 Things to Love about Military Life." It's a great compilation of resources, stories and journaling opportunities that needs to be part of every military family's library. You can order an autographed copy through the Castle Boutique.

Speaking of the Castle Boutique - Kathy Candido and her faithful companions continue to believe in the motto "have wonderful gifts to sell - will travel" and take the boutique on the road at every opportunity to local Engineer events. We thank them most profusely. You can check out the new items on the website. Remember, Valentine's day is coming!

With the new year, comes the time to look for new members of the Board for next year. I'm planting the seed - what would you like to do on the Board next year? Let our nominating chair Bette Meuleners know when she contacts you this spring.

Enjoy your February - do something fun on the long weekend, take advantage of the forced indoor time to read, rediscover or renew.

Essayons!

*Kathy Moakler
AESC President*





Saturday, March 3 – Wine Tasting and Live Music
 Time: 3:30pm
 Location:
 Home of Donna and Tony Leketa
 Gambrills, MD (near Annapolis)
 Donations benefit AESC Scholarship fund

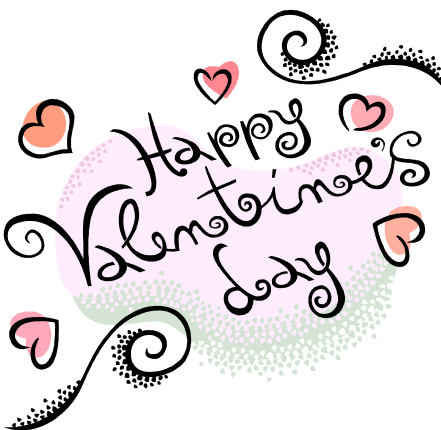
More Information will follow



THE CAPITAL CONNECTION

Upcoming Board Meeting

Wednesday, 1 February 2012
 1100-1300
 Home of Lynda Flowers
 7524 Weymouth Hill Rd
 Clifton, VA 20124
 703-815-3529
 Members are welcome



Q: Why are zero scores in tennis called 'love'?

A: In France , where tennis became popular, round zero on the scoreboard looked like an egg and was called 'l'oeuf,' which is French for 'egg.' When tennis was introduced in the US , Americans (mis)pronounced it 'love.'



WOMEN AND WAR

"The Fight Must Go On"

By Sharon Padgett

First and foremost I count it an honor to be able to share my thoughts from a spouse's point of view in this newsletter. I am the proud spouse of CSM Douglas Padgett who is currently deployed with the 14th EN BN (RUGGED) in support of Operation Enduring Freedom (OEF). We're stationed at Joint Base Lewis-McChord (JBLM), Washington and have two beautiful daughters, Alexis (23), Chelsea (17).

I'm a former pre-school teacher where I taught for over 20 yrs. Before moving to JBLM we decided I would take the next couple of years off to get Alexis and Chelsea through their senior year of college and high school while also assisting the spouses and families of the RUGGED BN through deployment. Alexis is at the University of Texas at El Paso. She is coping well and I am amazed at the young lady she has become. Chelsea is a senior in high school. I knew it would be a challenge for her not having her father around her last year of school. She plays basketball and her Dad has always been there for her, training and coaching her basketball teams since the age of 8. We have traveled around the world playing Amateur Athletic Union (AAU) basketball, meeting and playing with the best basketball players and coaches. Several colleges are scouting Chelsea, which meant I would be the one talking to the college coaches. Initially, I was a little nervous but as always my husband assured me that I had the personality and inner strength to be able to handle any situation that came my way.

There are days when things seem to get overwhelming. During those times I make sure I surround myself with positive people. We're only approximately 100 days through this deployment and I must say our family has experienced tremendous growth. Before Doug left, he wrote a vision for our household with many key points. He told us to dream big, live with a vision, have purpose driven lives, love each other unconditionally, and to stay focused to name a few. Reading over that mission statement daily really strengthens my inner man. I had to see myself far beyond my current situation. I began to tell myself "The Fight Must Go On". As a spouse, it's my duty here on the home front to uphold and maintain the household until my husband returns. While he is leading our Soldiers on the battlefield, I must remain focused on this battle on the home front.

I must say that the past 10 years of persistent conflict for our Armed Forces has really tested the Families. As I encourage the young spouses, I am also encouraging myself. Our mission on the home front is vital to the success of our deployed Soldiers. I encourage each spouse to always have a vision, surround yourself with positive people, know your role is important to the mission, and trust your inner strength. Every time I speak with Doug, he reminds me that he is living the American Dream. I am also living the American Dream with him knowing that we are supporting the Army's most precious commodity, Soldiers and Families. I know firsthand what it means to be RUGGED!!! Our Soldiers and Families are RUGGED.

My prayer is that God continues to watch over the Soldiers and Families daily. Together, we will make it because "The Fight Must Go On".

Birthdays.....



Mariangela Gordon	February 3
Betty Swygert	February 4
Deborah Wehr	February 4
Elizabeth Hill	February 5
Sue Wright	February 6
Bobby Buxbaum	February 16
Brandie Sinkler	February 22
Toni Mudd	February 29
.....	
Beth Mazzanti	March 4
Barbara Fleming	March 8
Diane Messinger Galloway	March 11
Roz Riley	March 16
Tammie Morris	March 17
Mollie O'Neill	March 20
Susan Hill	March 22
Anna Marie Cox	March 26
Jytte Hambric	March 27
Mary Fastabend	March 29
Wendy Ruch	March 31



MEMBER CELEBRATIONS

Celebrated The New Year with Gnocchi Cook-Off



Saturday 14 January AESC gathered at Sarah Pearce's home for a fierce battle of the cooks. Mary Pratt, Gene Villiva, and Kathleen Whittle submitted homemade gnocchi which was then judged by Al Tiramisu chef and owner Luigi Diotaiuti before being enjoyed by all present. Mary made potato gnocchi with a spicy marinara sauce. Gene brought a sweet offering...sweet potato gnocchi in a heavenly cream sauce. Kathleen's traditional potato gnocchi in pesto sauce was narrowly declared the winner. Bobby Buxbaum and Roz Riley generously donated gnocchi rollers to all entrants and a gift certificate to Al Tiramisu was presented to the winner. Chef Luigi was presented with a crystal Engineer Castle to thank him for his participation. Many thanks to Sarah for opening her home to AESC for this event.

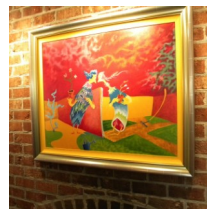
Mary Pratt



SHARING

December 3, 2011: Holiday Homes Tour – Old Town Alexandria, VA

December offered a tour of homes in Old Town Alexandria. It was a beautiful day paired with exquisite homes filled with remarkable artwork and furnishings. We walked through six different homes and witnessed what one can do in small or not so small spaces. The artwork was priceless, to include an original Dr. Seuss painting. Most homes restored some of its original architecture and features while including modern desires. Overall, we all had our favorite spaces and enjoyed a glimpse inside the doors.
Mary Pratt





**“CASTLE
BOUTIQUE
SUPER COMMITTEE”**

**14 Dec 2011
HQ USACE**



**SALE, BOOK, &
ORNAMENT
SIGNING**



**2011 JBMHH Holiday Tour of Homes
12 Dec 2011
Tour Donations Benefited TAPS
Photo Contributor: Bette Meuleners**





.....a note from Bette



Once again, it's that time....to start filling the slate for AESC's board for the next year. In the next few weeks I'll be checking with the current board to find out who will be able to continue serving in their positions for the year 2012-2013? After this, I'll contact the entire membership, more than likely by email, to see who might be interested in joining the board. Please seriously consider taking a position on the board--it's very rewarding. You'll meet Engineer spouses that you might not have had a chance to know otherwise, take part in many activities that are fun and interesting and worthwhile, including helping to raise funds to support our scholarship awards to Engineer children.

If you think you might be interested in serving on the board, please contact me!

Thanks!

*Bette Meuleners
AESC Nominations Chairperson 2011-2012
bmeuleners@gmail.com
571-235-3566*

Q. Why do X's at the end of a letter signify kisses?

A: In the Middle Ages, when many people were unable to read or write, documents were often signed using an X. Kissing the X represented an oath to fulfill obligations specified in the document. The X and the kiss eventually became synonymous.



X

X



RECRUITMENT

HUMOR

Laura Putnam
&
Nancy Temple

Co- Chair

AEMA SCHOLARSHIP

REMINDER—APPLICATION POSTMARKED BY 29 FEB 2012

**ARMY ENGINEER SPOUSES' CLUB
Army Engineer Memorial Awards
Geraldine K. Morris Award**

The Army Engineer Spouses' Club announces the Army Engineer Memorial Awards and the Geraldine K. Morris Award for 2012. The AEMA award is available to qualifying high school seniors who plan to continue their education at an accredited college, university, technical school, or vocational school. The Geraldine K. Morris Award is available to a graduating high school senior who intends to enroll in a program leading to a nursing degree or certification. Applicants may apply for both of the awards, if qualified, but can only be awarded one of the scholarships.

The AEMA award was established in 1973 as a living memorial to Army Engineer Officers killed in Vietnam and is given annually to honor all Engineers who died in the line of duty. This award is open to students in all fields of study.

The Geraldine K. Morris Award was established in 2006 to honor the service and memory of Mrs. Morris, a former Army nurse and Army wife. The awardee must be enrolled in a program leading to a nursing degree or nursing certification. The Geraldine K. Morris Award is renewable annually, based on GPA, provided a student maintains full-time enrollment in a nursing program.

Both awards are based on academic and extracurricular achievement during high school, along with a written essay. Awards must be applied toward tuition or scholastic expenses at a two-year or four-year college or university, technical school or vocational school. Applications must postmarked by February 29, 2012.

For more information, please contact the Scholarship Committee, c/o Nancy Temple, P. O. Box 6332, Alexandria, VA 22306-6332; or e-mail scholarships@armyengineerspouses.com. In your e-mail subject line, please indicate 2012 AEMA Award. The application is available on the AESC website at www.armyengineerspouses.com.



AESC 2011-2012 MEMBERSHIP APPLICATION

The Army Engineer Spouses' Club welcomes membership from spouses of all U.S. Army Engineers and all civilian employees of USACE and, with approval of the Executive Board, other persons who are associated with the Corps of Engineers.

PRINT NAME as you would like to be listed in the Castle Directory (The Redbook)

Last _____ First _____

Nickname _____ If you are in the military, list your rank & job title

Mailing Address _____

City _____ State _____ Zip Code _____

Home Phone: _____ Cell Phone: _____

Work Phone: _____ E-mail _____

The Castle Gram (in color) is sent to you via email. If you do not have email, a black and white copy will be sent to your home address.

Your Birthday (month/day only) _____ Anniversary Date _____

Preferred method of contact:

E-mail Home phone Cell phone Do not contact me

Check one:

New member - I was invited by _____

Returning member

Eligibility Information:

Spouse's Name _____

Check one: Is Spouse: Active Retired Deceased

Spouse's title/rank/job assignment

If retired, use current firm, if any. If active duty, use official abbreviation.

By sending this application, you agree to have the above information placed in the Castle Directory and/or Castle Gram, our monthly newsletter. Membership runs from July 1, 2011 until June 30, 2012. Membership information received by Oct 31, 2011 will be included in the 2011-2012 Castle Directory. After that date, new and renewing members will be announced in the Castle Gram. Thank you.

Annual dues + 1 copy of the Castle Directory \$25 _____

Additional Castle Directory(ies) : Each \$5 _____

Total: _____

Please make check payable to AESC and mail to: AESC MEMBERSHIP
P.O. Box 6332
Alexandria, VA 22306-6332

You may also print the membership application online at
<http://armyengineerspouses.com>.

Jackie Caldwell
Membership
Chairperson

Dues: \$25.00

Benefits:

Castle Gram monthly;
one copy of the
Castle Directory;
10% discount in the
Castle Boutique; &
being a part of the
only Engineer network
for spouses.

“Join today
and invite a friend!”



AESC
P.O. Box 6332
Alexandria, VA 22306